



# BREMER WHYTE

BREMER WHYTE BROWN & O'MEARA LLP



[www.bremerwhyte.com](http://www.bremerwhyte.com)



# BREMER WHYTE

BREMER WHYTE BROWN & O'MEARA LLP

## ABOUT BREMER WHYTE

Bremer Whyte Brown & O'Meara, LLP ("Bremer Whyte") is an AV rated law firm that provides a full range of transaction and litigation services to businesses and individuals. With offices in Newport Beach, Los Angeles, San Diego, Riverside, Northern California, Las Vegas, Phoenix, Reno and Denver, we take great pride as a full-service law firm committed to high-quality and responsive legal services.

Our law firm is known for its well-balanced combination of aggressive, competent litigators and negotiators, seasoned trial practitioners, and experienced transactional attorneys. Our attorneys have extensive experience in corporate law, contract negotiation and drafting, personal, product and property injury law, advertising loss, copyright and trademark infringement, family law, construction law, insurance coverage, employment law, entertainment litigation, estate planning, and general business and personal litigation services.

Our law firm is committed to our slogan - DEVELOPING SOLUTIONS TO MEET YOUR GOALS. We believe that an ethical, creative, thoughtful and tactful approach for each of our clients helps them meet their business, financial, and personal goals.



# BREMER WHYTE

BREMER WHYTE BROWN & O'MEARA LLP

## FIRM PROFILE

Bremer Whyte Brown & O'Meara LLP, an AV rated firm in Martindale-Hubbell, has branch offices in the cities of Newport Beach, Los Angeles, San Diego, Riverside, Northern California, Las Vegas (Nevada) and Phoenix (Arizona). Bremer Whyte Brown & O'Meara LLP is a full-service law firm with approximately 80+ attorneys firm wide, and is committed to high-quality, economic and responsive legal services.

The firm represents a combination of aggressive, competent litigators and negotiators, seasoned trial practitioners, and experienced transactional attorneys providing in-depth expertise in a wide range of legal areas. Bremer Whyte Brown & O'Meara LLP focuses its practice throughout the states of California, Nevada and Arizona.

### GENERAL CIVIL LITIGATION

Bremer Whyte's civil trial lawyers practice in state and federal courts, appellate courts, administrative tribunals and in arbitration and mediation proceedings. Clients range from individuals to small businesses to large multinational corporations. From the initial interview, to pre-suit counseling, negotiation, mediation and trial, each attorney works closely with you to develop solutions to meet your goals.

Bremer Whyte has represented a large number of local and national corporations and insurance companies facing product liability and mass tort actions involving an array of claims for personal injuries, property damages and economic losses. We offer experienced first-chair trial lawyers who know how to present the client's most effective defense to judge or jury in cases presenting the potential for significant damages exposure. We also have a large number of clients in related litigation for indemnity, lost profits and coverage claims.

We are especially skilled at developing factual and legal defenses for complex scientific and technical issues. We select technologies that minimize the cost of managing information and enhance communication with clients.

The Firm prides itself on developing a partnership with corporate counsel. Our attorneys emphasize early strategic thinking with the goal of obtaining the best business result for the client. Our approach to case management emphasizes litigation efficiencies. As examples, we have routinely engaged in early case assessment of risks and strategies, front-end trial readiness, collaboration and leveraging with other firms, innovative expert and jury work, and other techniques designed to reach early and favorable results. We are often asked to suggest methods of risk management to minimize the impact of an anticipated problem. Our attorneys have substantial experience in the following areas:

- Large Accident Cases
- Food Contamination
- Product Failure
- Trucking Accidents
- Commercial Claims for Product Defects
- Construction Site Injuries
- Design Professional and Attorney Malpractice Defense
- Prosecution of Qui Tam Action under Federal False Claims Act
- Representation of clients in Federal Multi-District Litigation

### GOVERNMENT ENTITY DEFENSE

Bremer Whyte is skilled in the defense of claims against municipalities and other governmental entities throughout California, Nevada and Arizona. Governmental entities can be easy targets in claims of negligence, abuse



# BREMER WHYTE

BREMER WHYTE BROWN & O'MEARA LLP

of authority, or dangerous condition. At Bremer Whyte, we have extensive experience with aggressively and successfully defending governmental municipalities and their employees. The genesis of our ties with public entities and our results are based upon the firm's commitment to understanding important issues, guidelines and immunities paramount to local government. Bremer Whyte has represented public entities in every stage of litigation and successfully tried cases involving virtually every aspect of governmental service. We have successfully served city governments, law enforcement agencies, school districts, public service districts, law enforcement officers and public utilities.

## CONSTRUCTION LAW AND LITIGATION

Bremer Whyte is well respected by colleagues, opposing counsel, judges, insurance carriers, and clients within this specialized category of civil litigation. Bremer Whyte's attorneys have significant trial experience representing developers, general contractors, owners, major and minor subtrades, and insurance carriers directly throughout California, Nevada and Arizona. Regardless of the size of the lawsuit, from a commercial structure to a single family home to more than 5000 condominium units, Bremer Whyte has the resources to zealously defend and resolve construction disputes on behalf of its clientele. Bremer Whyte has the contacts necessary to undertake representation when trial is near to determine case strategies and thereafter take an active role in the cost effective resolution of the case.

## CORPORATE

Bremer Whyte's business department is highly experienced in corporate transactional law and business litigation, able to handle a wide array of issues.

Bremer Whyte attorneys are well versed on complex corporate requirements, and have assisted clientele with formation of corporations (including "S," "C," and non-profit corporations), LLC's, partnerships, and joint ventures and related start-up requirements. Bremer Whyte attorneys also regularly advise corporate directors, officers, managers, and business entities with regard to everyday business activities, including employment issues, intellectual property rights, securities transactions, corporate governance, contracts, requirements imposed by the American With Disabilities Act, Family and Medical Leave Act, and California Family Rights Act, and acquisitions.

At the same time, Bremer Whyte's attorneys have an unwavering commitment to its business clients' interests, standing ready to litigate any dispute that cannot be resolved through informal negotiations. Regardless of the client's size, however, Bremer Whyte's primary emphasis of quality, yet personable service, remains a key factor to maintaining client relations.

### Representative Clients

- Performance Contracting Group, Inc.
- SD Deacon Corp.
- Colliers International
- Universal Forest Products
- Smart Systems Technologies
- Home Depot USA, Inc.
- Konica Minolta
- Network Capital Funding Corporation
- Living the Dream Foundation
- Kelly Slater
- Outerknown



# BREMER WHYTE

BREMER WHYTE BROWN & O'MEARA LLP

- Kelly Slater Wave Company
- Firewire Surfboards
- Lost Surfboards
- World Surf League
- Gradehub
- John's Incredible Pizza Company

## **Representative Transactional Matters**

- Represented an investor in the formation of Outerknown, an apparel company created by Kelly Slater.
- Represented an investor in the creation of a holding company owning several multi-million dollar businesses.
- Represented investors in a multi-million dollar flavor company involving sale of equity interests.
- Assisted in the formation of a business providing ground breaking grade management services for educators, including new investors.
- Represented Konica Minolta in several real estate acquisitions in California
- Assisted in the formation of Living the Dream Foundation, a non-profit corporation helping individuals with terminal diseases

## **Representative Litigation Matters**

- Lead trial counsel in dispute between shareholders concerning the appointment of a provisional director.
- Lead trial counsel in defense of a well-known restaurant chain concerning commercial claims brought by a prior vendor.
- Lead trial counsel in defense of multi-million dollar staffing business relating to a partnership dispute and claims of fraud.
- Lead trial counsel in defense of a former director of a company relating to claims director breached his fiduciary obligations during his service.
- Lead trial counsel for statewide transportation company in a class action lawsuit relating to various labor claims brought by numerous plaintiffs.
- Lead trial counsel in homeowner action against their former contractor concerning failure to honor the provisions of the construction contract.
- Lead trial counsel for defense of national vitamin supplement company against plaintiff's claims for breach of contract and fiduciary duties.
- Lead trial counsel in commercial dispute involving equipment lease and leasing company's residual rights under the lease agreement.
- Lead counsel in membership dispute of a limited liability company concerning various call option agreements entered into by certain members and fiduciary claims between the parties.
- Lead counsel for national construction company in multi-million dollar dispute over its contract with owner/developer of a large multi-million dollar commercial project.
- Lead counsel for regional real estate developer in defense of claims by plaintiffs of fraud and



# BREMER WHYTE

BREMER WHYTE BROWN & O'MEARA LLP

violation of statutory requirements in developing a residential project.

- Lead counsel for international medical supply company in legal action relating to a dispute against its broker concerning a high dollar commercial real property lease.
- Lead counsel for pharmaceutical valve manufacturer in matter involving trade secret claims and related allegations.
- Lead counsel for national lighting company in a federal action involving the misappropriation of trade secrets against its regional competitors.
- Lead counsel for international real estate brokerage involving its agreements in varying matters.
- Counsel for memory module manufacturer in claims against its supplier for trade secret misappropriation and related business tort claims.
- Successfully defended national mortgage lender concerning varying claims for breach of its service agreements in a federal case.
- Counsel for real estate developer in matters concerning multiple lien issues on several of its developments.
- Representation of commercial real estate developer/owner in varying claims concerning its holdings.

## **FAMILY LAW**

Bremer Whyte provides individualized counseling and representation in all areas of family law. Of the myriad of difficult issues that a client may confront, family issues are often the most mentally and emotionally draining. When faced with issues of this nature, it is important that you retain an attorney who will listen carefully to your problems and provide thoughtful, competent representation.

Bremer Whyte understands that each case is unique, and will spend the time to thoroughly evaluate your case in order to provide effective solutions tailored to the unique circumstances of your case. Bremer Whyte has the experience and expertise necessary to help you successfully navigate through the legal complexities associated with many family issues. Our expertise includes: Divorce, Custody, Visitation, Modifications, Adoptions, Guardianships, Child Support, Parentage / Paternity, Property Division, Prenuptial Agreements, Postnuptial Agreements, Contempt/Enforcement, Wills, Probate.

## **ENVIRONMENTAL TOXIC TORT/HABITATIONAL LITIGATION**

Bremer Whyte has extensive, broad-based experience representing businesses, corporations, individuals and insurance companies facing liability and mass tort actions stemming from environmental, toxic tort and habitational statute violation claims and litigation. The Firm represents clients in cases ranging from personal injury claims from benzene and asbestos exposure, to toxic mold claims and landlord habitation statute violations. These complex, multiple-party cases create overlapping areas of liability including extensive personal injuries, property damages and economic losses, as well as possible massive statutory-based penalties. We offer highly respected, well-seasoned counsel trial counsel who combine their litigation skills with well-known expertise in early evaluation, mediation and alternate dispute resolution.

The Firm is at the cutting edge of scientific research and medical/technical evaluations of claims for its environmental toxic tort and habitation cases, and we work closely with the acknowledged leaders in the scientific and technical fields to provide the best evaluation and defenses for our clients.



# BREMER WHYTE

BREMER WHYTE BROWN & O'MEARA LLP

The Firm has developed a well-regarded reputation as the attorneys who resolve or take to trial the most technically difficult large exposure mass tort cases by virtue of its strategic approach of early evaluation of liability and potential client exposure, close work with client and corporate counsel, and technically advanced scientific and medical analysis of claims.

## COMMUNITY ASSOCIATION AND PROPERTY MANAGEMENT LITIGATION

Bremer Whyte's experience in litigation stemming from homeowner/community association and property management issues is extensive and covers a wide array of claims ranging from CC&R, Bylaw or rules issues to common area maintenance and repair issues to personal injury and property claims. The Firm also represents property management companies retained by homeowner/community associations in litigation involving the management and care of homeowner/association common areas and general management.

Bremer Whyte has developed a well-deserved reputation for handling these complex, highly contentious litigation matters with a calm focus on issues and resolutions, and for resolving those cases generally considered as impossible to reconcile. The Firm takes pride in providing creative or alternative solutions to difficult cases and claims, with the goal of providing the best resolution possible for the client. Bremer Whyte works very closely with the client's corporate counsel in such matters, partnering on the client's defenses and representation all with the goal of obtaining the very best possible outcome for the client.

However, when resolution is not possible, Bremer Whyte's well experienced trial counsel are ready and able to litigate homeowner/community association and property management matters, and have earned the respect of opposing counsel through hard fought legal battles while doing so.

## EMPLOYMENT LAW

Bremer Whyte maintains a full-service employment law department. The law firm provides legal advice, guidance and representation to its various business/corporate clientele, including counseling and defense against Federal and State based wrongful termination, harassment, and discrimination claims, wage and hour claims, preparation and updating of employee policies/employee handbooks, assistance and guidance with respect to employee discipline and termination issues, and FMLA/CMLA/ADA employee accommodations. Bremer Whyte also provides on-site seminars for employers to assure compliance with California's mandatory supervisor employee harassment training requirements.

## WILLS TRUSTS & ESTATES

Bremer Whyte provides complete estate planning and probate services including consultation regarding the most appropriate plan for you and your family given the composition of your estate and your goals. Our services in this regard include wills, advance healthcare directives, powers of attorney, and all forms of trusts including revocable and irrevocable trusts, disclaimer trusts, A/B trusts, Q-Tip trusts, charitable trusts, and companion animal trusts. Moreover, as your family situation, the composition of your estate, and the federal estate laws change, it may be that your existing plan is no longer suitable for your needs. We can review your existing estate planning documents to update them to match your current situation in light of the shifting laws in this area. In addition, for those who have family members who were unable to establish trusts before passing, we will also handle the probate of their estates, whether testate or intestate. Often there are ways to avoid probate even without a trust. Finally, we can also establish guardianships and conservatorships when needed.



# BREMER WHYTE

BREMER WHYTE BROWN & O'MEARA LLP

## REAL ESTATE

Bremer Whyte's attorneys are well versed in real estate law, both residential and commercial, and stand ready to assist its clients with any legal issue that arises, whether such issue involves a landlord/tenant dispute, creation of a complex commercial lease, or residential non-disclosure issues. Bremer Whyte's clients include individual homeowners, brokers and agents, property inspection companies, landlords, residential and commercial tenants, homeowners associations, and property management firms.

## PROFESSIONAL LIABILITY

Bremer Whyte has represented numerous different types of professionals in professional liability cases, including directors & officers, insurance brokers, medical providers, accountants, attorneys, construction design professionals and many more. Bremer Whyte understands the unique issues involved in defending professional liability cases, including the personal nature of the cases. When a professional's reputation is at stake, great care must be taken to not only defend the merits of the case, but to protect the good name of the client as well. Bremer Whyte also understands the insurance policies that are specific to professionals, and respects that the policy limits are an important company asset which is to be protected.

## INTELLECTUAL PROPERTY LITIGATION

Bremer Whyte has a broad base of experience in the area of intellectual property litigation. The Firm's attorneys handle a variety of matters in this practice area. Our experience includes a diverse number of claims brought under the Federal Lanham Act, as well as other similar state-based statutes. Cases handled in this area include claims of unfair competition, false advertising, trade libel, trade name / trade dress infringement, trademark dilution and copyright infringement. Additionally, Bremer Whyte has substantial experience in representing clients in trade secret litigation, under both state and federal law. A few of our representative matters are summarized below:

- Defense of a regional packaging company against its national competitor concerning claims brought pursuant to the Lanham Act – each relating to allegations of false advertising and trade libel by client of the claimant's products.
- Defense of vitamin supplement manufacturer against claims of trade dress infringement brought by its competitor under the Lanham Act in relation to its packaging.
- Prosecution of claims on behalf of a recreational and sporting goods manufacturer that a competitor's use of a product name infringed on its mark under the Lanham Act.
- Defense of regional security firm against competitor's claims of trademark dilution, unfair competition, trade libel and false advertising arising under both common law and the Lanham Act.
- Defense of national housekeeping service against claims by a regional competitor that a particular advertisement violated its common law trade name and constituted unfair competition.
- Prosecution of claims on behalf of a pharmaceutical valve manufacturer concerning allegations of trade secret misappropriation and trade libel against its competitors.
- Prosecution of claims on behalf of a national mortgage lender against various third parties for trade secret misappropriation and unfair competition.
- Prosecution of claims on behalf of national lighting company concerning claims against its competitors for misappropriation of its trade secrets and advertising injury.





# BREMER WHYTE

BREMER WHYTE BROWN & O'MEARA LLP

## TRUCKING AND TRANSPORTATION

Bremer Whyte provides defense for several large trucking firms as well as for businesses with trucking and/or transportation components that constitute significant portions of their operation. The Firm serves as lead trial counsel on the west coast to Waste Management, Inc. a fortune 500 company, defense counsel for Sysco Corporation, a global food product distribution company as well as numerous other clients with significant trucking and transportation exposure. Our extensive experience in trial litigation of catastrophic injury cases and office locations throughout the western United States are uniquely suited to the severe losses and diverse locations that are characteristic of trucking and transportation cases.

Additionally, our firm provides a unique Rapid Response service to the trucking industry. Immediate response is critical in the course of investigation of trucking accidents involving bodily injury claims. Accident scenes can and do change within hours and even minutes. Therefore, immediate documentation and preservation of on-scene evidence is of the utmost importance. Even though the investigating officer/police photograph and measure all relevant evidence, having an independent source photograph, measure and document the same evidence may prove invaluable later on. Our Rapid Response team can immediately direct and hire all experts and investigators to help preserve the privilege for as long as possible.

Thank you for your interest in Bremer Whyte Brown & O'Meara LLP



# BREMER WHYTE

BREMER WHYTE BROWN & O'MEARA LLP

## PARTNERS

Nicole Whyte<sup>1,2,3,10,\*</sup>

Keith G. Bremer<sup>1</sup>

Raymond Meyer, Jr.<sup>1</sup>

Peter C. Brown<sup>1,2,3,4,10</sup>

John V. O'Meara<sup>1,2,4</sup>

Kere K. Tickner<sup>1</sup>

Tyler D. Offenhauser<sup>1</sup>

Patrick Au<sup>1</sup>

Jeremy S. Johnson<sup>1</sup>

John H. Toohey<sup>1,3</sup>

Vik Nagpal<sup>1</sup>

Karen M. Baytosh<sup>1,2</sup>

Monique R. Donovan<sup>1</sup>

Arash S. Arabi<sup>1</sup>

Lanetta D.W. Rinehart<sup>1</sup>

John J. Belanger<sup>3</sup>

Paul A. Acker<sup>2</sup>

Alison K. Hurley<sup>1</sup>

Lucian J. Greco<sup>2</sup>

Anthony T. Garasi<sup>2</sup>

Rachel A. Mihai<sup>1</sup>

Michael A. D'Andrea<sup>1</sup>

Sheila C. Stiles<sup>1,\*</sup>

1 Admitted in California  
2 Admitted in Nevada  
3 Admitted in Arizona  
4 Admitted in Colorado  
5 Admitted in Ohio  
6 Admitted in Washington D.C.  
7 Admitted in Oregon

8 Admitted in Montana  
9 Admitted in Wyoming  
10 Admitted in Washington  
11 Admitted in New Jersey  
12 Admitted in New York  
13 Admitted in Illinois  
14 Admitted in Utah

\* Certified Family Law Specialist

[www.bremerwhyte.com](http://www.bremerwhyte.com)



# BREMER WHYTE

BREMER WHYTE BROWN & O'MEARA LLP

## LOCATIONS



**ORANGE COUNTY**  
20320 S.W. Birch Street  
Second Floor  
Newport Beach CA 92660  
Ph: (949) 221-1000  
Fx: (949) 221-1001



**BERKELEY**  
2130 Center Street Suite 103  
Berkeley, CA 94704  
Ph: (510) 540-4881  
Fx: (510) 540-4889



**LAS VEGAS**  
1160 N. Town Center Drive  
Suite 250  
Las Vegas NV 89144  
Ph: (702) 258-6665  
Fx: (702) 258-6662



**DENVER**  
4600 S. Syracuse 9th Floor  
Denver CO 80237  
Ph: (303) 256-6327  
Fx: (303) 256-6205



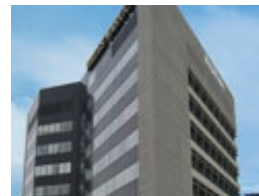
**LOS ANGELES**  
21271 Burbank Blvd. Suite 110  
Woodland Hills CA 91367  
Ph: (818) 712-9800  
Fx: (818) 712-9900



**RIVERSIDE**  
5225 Canyon Crest Drive  
Suite 71-363  
Riverside CA 92507  
Ph: (951) 276-9020  
Fx: (951) 276-9022



**SAN DIEGO**  
501 West Broadway Suite 1750  
San Diego CA 92101  
Ph: (619) 236-0048  
Fx: (619) 236-0047



**RENO**  
200 S. Virginia Street  
Suite 800  
Reno, Nevada 89501  
Ph: (775) 398-3087  
Fx: (775) 686-2401



**PHOENIX**  
3200 North Central Avenue  
Suite 2450  
Phoenix AZ 85012  
Ph: (602) 274-1204  
Fx: (602) 274-1205



# BREMER WHYTE

BREMER WHYTE BROWN & O'MEARA LLP

## REPRESENTATIVE CLIENTS

### Business Clients:

ACS Security Industries, Inc.  
Bi-State Propane  
Bravo Sports, Inc.  
Covi Concrete Construction, Inc.  
Del Taco Corporation  
Discover  
Enterprise Rentals  
McCormick Construction Company  
Merzon Industries  
Money Tree  
Nationwide Holdings  
Owens Corning  
Toshiba North America  
Vector Control Joint Powers Agency  
Waste Management, Inc.  
Nobel Biocare Holdings USA, Inc.  
Sears Holdings Corporation  
Sysco Corporation  
The Del Mar Fairgrounds

### Third Party Claims Companies:

Devonshire Group  
Broadspire  
Carl Warren & Company  
Claims Resource Management  
Midlands Claim Administrators, Inc.  
Riverstone Resources  
West Coast Casualty Services, Inc.  
American Claims Services, Inc.  
Crawford & Co.

### Insurance Carriers:

Allied Insurance Co.  
Arch Specialty Insurance Services  
ARCH Trinity Insurance  
Clarendon Insurance Company  
Commercial Underwriters/  
Underwriters Insurance Company  
Connecticut Specialty Insurance  
Company  
Employer's Mutual Casualty Co.  
Farmers Insurance Exchange  
Federated Insurance Company  
Gemini Insurance Co. of Forth  
Worth, Texas  
Hawkeye Insurance  
LMI Insurance Company  
Certain Underwriters at Lloyds of  
London  
North American Services Insurance  
One Beacon Insurance Co.  
Ranger Insurance Company  
Safeco Insurance Company  
TIG Insurance Company  
Truck Insurance Exchange  
Tudor Insurance Company  
Unigard Insurance  
USLI  
AIU Holdings, Inc.  
Everest National Ins. Co.  
Lincoln general Ins. Co.  
Ace Insurance Co.  
CNA  
Allianz Insurance Co.

Zurich North American Ins. Co.

### Governmental Entities

City Of La Habra  
City Of Hesperia  
City Of San Diego  
City Of Del Mar  
City Of Orange  
City Of Los Angeles  
City Of Anaheim  
City Of Pico Rivera  
City Of Bakserfield  
City Of Canyon Lake  
City Of Boulder City



# BREMER WHYTE

BREMER WHYTE BROWN & O'MEARA LLP

## KEITH G. BREMER

Keith G. Bremer has been identified by the well recognized Daily Journal as one of California's top 100 attorneys. He is a member of the American Board of Trial Advocates (ABOTA), an AV rated attorney by Martindale-Hubbell and voted Super Lawyer on multiple occasions. He is the senior partner of Bremer, Whyte, Brown and O'Meara LLP, a 100 plus member law firm with full service offices in Los Angeles, Newport Beach, Northern California, Las Vegas, San Diego, Arizona, Colorado and a satellite office in Riverside.

Mr. Bremer has experience in all aspects of civil and cyber litigation and has had the privilege of representing auto manufacturers, auto dealerships, contractors and business owners in trial.

Mr. Bremer has been a featured contributor in the Orange County Register, and has been editorialized in, among others, Newsweek, The New Yorker Magazine, the Los Angeles Times, Los Angeles Daily Journal, CBS, Fox, KCAL, AOL, CNN and KTLA news. He has appeared on ABC's 20/20, Dr. Phil, Fox and The Katie Couric Show. Mr. Bremer is regularly consulted by lobbyists and the insurance industry to provide input on proposed legislation in the legal field from California to Colorado.

Mr. Bremer received and recovered a verdict over \$4 million which was affirmed by way of a published opinion out of the 4th Appellate Court of Appeals. He also has a published opinion addressing the internet and right to privacy out of the 4th Appellate Court of Appeals. He is a two time recipient of Farmers Gladiator Trial Award. He is a member of the Southern California Defense Counsel and the Orange County Bar Association. Mr. Bremer is a regularly featured speaker at seminars throughout the United States.



Newport Beach  
949.221.1000  
949.221.1001 fax  
kbremer@bremerwhyte.com



# BREMER WHYTE

BREMER WHYTE BROWN & O'MEARA LLP

## NICOLE WHYTE

Nicole Whyte is a founding principal of Bremer Whyte Brown & O'Meara LLP. Admitted to the South African Supreme Court in 1990, the California State Bar in 1991, the Nevada State Bar in 2000, and the Washington D.C. State Bar in 2011, Ms. Whyte has extensive experience in all aspects of litigation, with a focus in the areas of complex civil litigation, trucking law and insurance defense. Ms. Whyte serves as lead trial counsel on the west coast to Waste Management, Inc., a fortune 500 company. Ms. Whyte has successfully handled hundreds of complex, multi-million dollar lawsuits and has been awarded the highest accolade in Martindale-Hubbell: an AV rating. This was as a result of an extensive, confidential review conducted among the legal profession in her community. The AV rating signifies Ms. Whyte's legal abilities are of the very highest standard and her professional ethics are unquestioned. Ms. Whyte has been named California "Super Lawyer" by Los Angeles Magazine in 2006 and 2012. Ms. Whyte is also a certified family law specialist and recipient of the prestigious Angelo Palmieri award for professional excellence in litigation and trial work.



Ms. Whyte has written extensively in the field of civil litigation, with many published articles in this area of specialty. Ms. Whyte has also lectured to various organizations on her other areas of specialty, including West Coast Casualty Seminar 1998: Care, Feeding and Handling of Experts; West Coast Casualty Seminar 2000: The Effects of the Aas decision - A Subcontractor's Perspective; Lorman's Construction Defect Claims in California: The Subcontractor's Perspective: Defending the Trades; Mealey's Construction Defect Litigation Conference 2001: The Art of the Release: From Standing to Structured Settlements; and West Coast Casualty Seminar 2002: The Nuts and Bolts of Handling a Construction Defect Lawsuit: Mc<sup>2</sup> 2011 Seminar: The Art of Voir Dire.

In addition to speaking for many organizations, Ms. Whyte is a member of the Construction and Insurance sections of the Orange County Bar Association, the Clark County Bar Association (Nevada) and ABA (American Bar Association). She is a past member of the Association of w Family Law Specialists. She is also a member of the Civil Procedure and Evidence panels of the Orange County Bar Association's Resolutions Committee, responsible for invoking constructive changes in the legislation. She is a twice graduate from the National Institute For Trial Advocacy (NITA) program in trial advocacy, and is Master Benchler of the Robert A. Banyard Inn of Court. In addition, Ms. Whyte serves as a mediator and settlement officer for the local Superior Courts.

A native of Johannesburg, Ms. Whyte received her Bachelor of Arts and her LLB from the University of the Witwatersrand, Johannesburg, South Africa in 1985 and 1987, respectively. After graduating from law school, she served as state prosecutor at the Johannesburg Magistrate's Court, handling criminal trials. Following her tenure as state prosecutor, she gained civil litigation experience at a general practice, civil law firm in Johannesburg, South Africa. Ms. Whyte immigrated to the United States in 1991.

Ms Whyte and her husband, Steven Nataupsky, managing partner of the Intellectual Property law firm Knobbe Martens, live with their 4 young children in Newport Beach. When not practicing law, Ms Whyte enjoys spending time with her family, exercise and piano, travel, and reading.

Newport Beach  
949.221.1000  
949.221.1001 fax  
nwhyte@bremerwhyte.com



# BREMER WHYTE

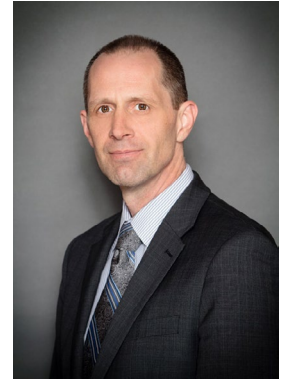
BREMER WHYTE BROWN & O'MEARA LLP

## PETER C. BROWN

Peter C. Brown is the managing partner of the Las Vegas and Denver offices of Bremer, Whyte, Brown & O'Meara. Las Vegas serves as Mr. Brown's home base, but he is constantly on the move handling complex litigation for his clients throughout the western United States. Mr. Brown has extensive experience in all aspects of civil litigation, including construction defect, personal injury and general liability. Mr. Brown has handled numerous multi-million dollar cases to verdict.

Mr. Brown earned his Bachelor of Arts in Theatre from U.C. Davis and his Master of Fine Arts in Theatre from U.C. San Diego. Prior to becoming an attorney, Mr. Brown worked as a professional actor in the fields of television, film and theatre. Mr. Brown worked throughout the country in numerous productions before deciding to "take his act" from the stage to the courtroom. Mr. Brown's acting background has served him in good stead both in court and as a speaker at numerous seminars on civil litigation.

Mr. Brown earned his Juris Doctorate from Pepperdine University School of Law. Mr. Brown is a member in good standing of the California, Nevada, Arizona, Colorado and Washington State Bars.



Las Vegas  
702.258.6665  
702.258.6662 fax  
pbrown@bremerwhyte.com



## JOHN V. O'MEARA

John O'Meara, an AV-Preeminent rated attorney through Martindale Hubbell, is a managing partner of Bremer Whyte Brown & O'Meara, LLP. Mr. O'Meara's career as a trial lawyer spans 24 years and includes the handling of the following general categories of actions on behalf of individuals, entities and over 100 insurance companies and claim administrators based in the United States and in Europe:

- Design professionals, developers, general contractors, and subcontractors in construction deficiency and construction accident litigation
- Health care professionals, attorneys, accountants, real estate agents and other specialists in professional liability cases
- Individuals, premises and business owners in general liability, real estate, habitability, security and employment cases
- Automobile, tractor-trailer and other vehicle owners and drivers in accident cases
- Product manufacturers, suppliers and sellers in product liability cases
- Individuals, companies and manufacturers in toxic tort cases
- Property owners and management companies in habitability cases
- Caregivers in elder abuse cases
- Municipalities in a variety of litigated cases, including inverse condemnation and dangerous condition

Mr. O'Meara has tried automobile cases, professional liability cases, construction defect cases, land subsidence cases, toxic exposure cases and others. Mr. O'Meara speaks nationally and internationally on various topics to trade groups and the insurance industry. Mr. O'Meara is a paneled mediator and arbitrator for Alternative Resolution Centers and AMCC, where he specializes in the economical resolution of construction defect and general liability cases. He is also on the mediation and arbitration panel for the Counties of Los Angeles and Ventura. He has also been retained as an expert witness to testify as to the standard of practice of attorneys.

Mr. O'Meara is licensed to practice in the States of California, Nevada and Colorado (currently inactive), as well as the United States District Court and the Ninth Circuit Court of Appeal. He is also a sitting Planning Commissioner for the City of Agoura Hills, California. Mr. O'Meara has also been voted a Super Lawyer, which is an award given to the top five percent of attorneys, and is based on peer review and achievement.



Woodland Hills  
818.712.9800  
818.712.9900 fax  
[jomeara@bremerwhyte.com](mailto:jomeara@bremerwhyte.com)





RAYMOND MEYER, JR.

Raymond Meyer, Jr. is the managing partner of the Northern California Office of Bremer Whyte Brown & O'Meara LLP. Mr. Meyer is an aggressive litigator who has successfully handled numerous multi-million dollar cases to conclusion through arbitration, settlement and trial. Mr. Meyer's trial results have been profiled in the Los Angeles Daily Journal's Verdicts and Settlements "Litigator Profile" section under the "Cases in Focus."

Mr. Meyer was born in Washington. After earning his Bachelor of Science degree in International Business from New York State University in 1984, he entered the United States Air Force where he served, among other things, as a Czech linguist. Mr. Meyer subsequently earned his Masters in Business Administration, with a concentration in management, from Golden Gate University in 1988. Mr. Meyer earned his Juris Doctorate from Western State University in San Diego in 1994. While in law school, Mr. Meyer clerked for Judge Victor Bianchini of the San Diego Superior Court and later interned with the United States Attorney in San Diego, in the Asset Forfeiture Unit.

Mr. Meyer has handled a variety of insurance coverage, insurance defense, construction defect, injury and product liability matters. Currently, Mr. Meyer is involved in various local building trade events and has spoken before trade organization groups on various topics related to construction defect litigation. Mr. Meyer has been nominated by his peers through balloting to the 2004 and 2005 Southern California Super Lawyers which identifies attorneys in the Southern California Bar region under 40 years of age or with ten or fewer years of practice as The Rising Stars of Southern California Law." He was nominated in the "Construction" practice area. The attorneys who make this list are limited to the top 2.5% of ballot point earners from the responding attorneys who have actually seen the nominated attorney in action.

Mr. Meyer focuses his litigation and transactional experience in the representation of contractors throughout California, as well as complex construction defect, general liability, personal injury, insurance and business litigation.



Berkeley  
510.540.4881  
510.540.4889 fax  
rmeyer@bremerwhyte.com



## KERE K. TICKNER

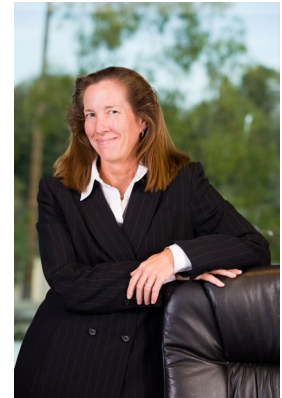
A partner with Bremer Whyte Brown & O'Meara LLP, Ms. Tickner's experience in complex civil litigation is extensive. She handles a broad variety of civil litigation matters including construction defect, personal injury, labor/employment and general business litigation, while also tailoring her practice towards the corporate, labor/employment, and general business legal needs of her various clientele. Within Bremer Whyte Brown & O'Meara LLP, Ms. Tickner's knowledge of procedural law and law and motion, both orally and written, is used to mentor new associates in writing technique and style.

Ms. Tickner was born in Texas in 1962. She received her Bachelor of Arts degree from the University of San Francisco in 1984. During college, and continuing upon graduation, Ms. Tickner worked as a paralegal, specializing in business law, taxation, wills and trusts, real property, and transactional law.

Ms. Tickner thereafter received her Juris Doctorate degree from the University of La Verne, College of Law in 1994. During law school at the University of La Verne, Ms. Tickner received American Jurisprudence Awards for Torts and for Appellate Advocacy, and received an invitation to join the Law Review. She also received awards for Best Brief and Best Oral Argument at the Moot Court Finals Competition in 1992. Ms. Tickner was elected Vice Dean of the Delta Theta Phi Law Fraternity and also clerked at the Fourth District Court of Appeals, Second Division for then Associate Justice Robert J. Timlin (now Federal Justice Timlin). Ms. Tickner graduated 4th in her class, with honors.

Ms. Tickner is admitted to practice before all courts in the State of California and the U.S. District Court, Central, Southern and Eastern Districts of California, as well as the United States Court of Appeals for the Ninth Circuit. Prior to joining Bremer Whyte Brown & O'Meara LLP, Ms. Tickner worked as an associate for Kring & Brown, and also spent one year with Mundell, Odium & Haws, a firm specializing in complex business, labor and employment litigation.

Ms. Tickner is a Barrister of the prestigious Banyard Inn of Court and a member of the American Bar Association. Ms. Tickner emphasizes the areas of complex civil litigation, labor/employment litigation, construction litigation, business litigation, and corporate and general labor/employment and business law.



Newport Beach  
949.221.1000  
949.221.1001 fax  
ktickner@bremerwhyte.com



TYLER D. OFFENHAUSER

Tyler D. Offenhauser is a partner with Bremer Whyte Brown & O'Meara LLP's Newport Beach Office. He has been a member of the firm since 1999. Mr. Offenhauser was born in San Diego, California in 1966. He graduated from San Diego State University in 1991 with a Bachelor of Arts degree in Political Science. Mr. Offenhauser obtained his law degree from American College of Law in January 1996.

Mr. Offenhauser focuses his practice to complex civil litigation, with particular emphasis in personal injury, wrongful death, catastrophic loss and high profile liability litigation involving automobile accidents, slip and falls, product liability, and medical malpractice. As a trial attorney, Mr. Offenhauser is responsible not only for the litigation aspects of the case, but also the day to day management of the cases that he is involved with. His primary goal, and that of the firm, is to work closely with all of his clients on their cases from inception through settlement or trial

Mr. Offenhauser is admitted to practice before the California Supreme Court as well as the United States District Court, Central District. Mr. Offenhauser is a member of the Orange County Bar Association and Robert A. Banyard Inn of Court.



Newport Beach  
949.221.1000  
949.221.1001 fax

[toffenhauser@bremerwhyte.com](mailto:toffenhauser@bremerwhyte.com)



# BREMER WHYTE

BREMER WHYTE BROWN & O'MEARA LLP

## PATRICK AU

Mr. Au is a partner with Bremer Whyte Brown & O'Meara LLP's Woodland Hills office and has experience in a variety of civil litigation areas including construction defect, general liability, business litigation, municipal defense, premises liability and personal injury. Mr. Au's primary focus is construction defect litigation where he has over fifteen years of experience. Mr. Au has defended general contractors, developers as well as practically every subtrade imaginable.

Patrick Au was born in Hong Kong, China, and moved to the United States at age 2. Mr. Au attended the University of California at Los Angeles where he obtained his Bachelor of Arts degree in Economics in May, 1990. Subsequently, Mr. Au studied at Pepperdine University School of Law where he earned his Juris Doctorate degree in May, 1993. During law school, Mr. Au participated in Pepperdine's prestigious Alternative Dispute Resolution Program completing courses in Negotiations, Mediation and Arbitration.



Woodland Hills  
818.712.9800  
818.712.9900 fax  
[pau@bremerwhyte.com](mailto:pau@bremerwhyte.com)



## JEREMY S. JOHNSON

Jeremy Johnson is a partner with Bremer Whyte Brown & O'Meara, LLP. Mr. Johnson devotes his practice primarily to cases involving varying business and real estate disputes, complex civil litigation and corporate matters. He has represented a wide variety of clients during litigation and through trial in cases concerning contractual disputes, trade secret misappropriation claims, corporate governance and fiduciary litigation. Since 2006, he has managed the Firm's business and corporate practice group.



### **Representative Matters**

- Lead trial counsel in defense of multi-million dollar staffing business relating to partnership dispute and fraud claims.
- Lead trial counsel in defense of a former director of a company relating to claims director breached his fiduciary duties during his service.
- Lead trial counsel for statewide transportation company in a class action lawsuit relating to various labor claims brought by numerous plaintiffs.
- Lead trial counsel for defense of national vitamin supplement company against plaintiff's claims for breach of contract and fiduciary duties.
- Lead counsel for regional real estate developer defending claims by plaintiffs of fraud and violation of statutory requirements in developing a project.
- Lead counsel for international medical supply company in legal action relating to a dispute against its broker concerning a high dollar commercial real property lease.
- Lead counsel for pharmaceutical valve manufacturer in matter involving trade secret claims and related allegations.
- Lead counsel for national lighting company in a Federal action involving the misappropriation of trade secrets against its regional competitors.
- Representation of memory module manufacturer in claims against its supplier for trade secret misappropriation and related business tort claims.
- Representation of national mortgage lender concerning varying claims for breach of its service agreements.
- Representation of real estate developer in matters concerning multiple lien issues on several of its developments.
- Representation of commercial real estate developer/owner in varying claims concerning its holdings.

Newport Beach  
949.221.1000  
949.221.1001 fax  
[jjohnson@bremerwhyte.com](mailto:jjohnson@bremerwhyte.com)

### **Publications**

- 2005, Protecting Your Competitive Advantage in the Marketplace, Grand Tour Magazine, September 2005.
- 2006, The Pros and Cons of Arbitration Agreements, Grand Tour Magazine, September 2006.
- 2006, Keeping in Line with the Real Estate Settlement Procedures Act (RESPA), Grand Tour Magazine, July 2006



JOHN H. TOOHEY

Based in Newport Beach, CA, John H. Toohey is the firm-wide, Managing Partner for Bremer Whyte Brown & O'Meara, LLP. Mr. Toohey oversees firm-wide operations for all nine offices, including personnel, technology, human resources, marketing and client relations. He is the architect of the firm's current business model and a champion for both community involvement & diversity initiatives, and leads by the principle of the Firm's commitment to provide Solutions to Fit Your Goals.

In addition, Mr. Toohey's practice is focused in contract negotiation and litigation, complex product liability, construction, and wrongful death/catastrophic injury. He has successfully represented hundreds of clients in alternative dispute resolution and trial, including multiple cases to jury verdict. Representing industry leaders in transportation, construction and insurance, Mr. Toohey is recognized as an expert in insurance and construction defect litigation.

Mr. Toohey is admitted to practice in the State of California, the State of Arizona, and the United States District Courts - Eastern, Central and Southern. He is also a member of the Orange County Bar Association. Born in Laguna Beach, California, the Southern California native received his Bachelor of Arts in Political Science from Long Beach State University in 1993, at which he was a member of the Long Beach State Rowing Team that won the 1989 U.S. Pacific Coast Rowing Competition. He then obtained his Juris Doctorate from Thomas Jefferson School of Law in 1999. While in law school, Mr. Toohey clerked for the Honorable Robert E. May, externed for the United States Attorneys' Office - Appellate Division and was the founder of the Mulligan Golf Club.

Mr. Toohey is a running and sports enthusiast. He currently resides in Costa Mesa, California with his wife Lynn and two daughters.



Newport Beach  
949.221.1000  
949.221.1001 fax  
[jtoohey@bremerwhyte.com](mailto:jtoohey@bremerwhyte.com)



# BREMER WHYTE

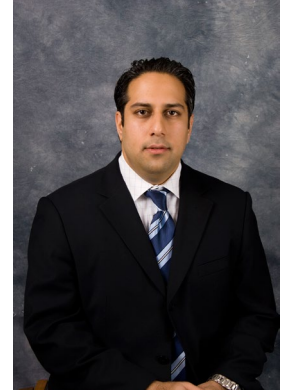
BREMER WHYTE BROWN & O'MEARA LLP

## VIK NAGPAL

Vik Nagpal is the managing partner with Bremer Whyte Brown & O'Meara LLP's San Diego office. He has extensive real estate and business litigation experience, having practiced law in both Northern and Southern California since 2000. Mr. Nagpal is admitted to practice law before all of the courts in California.

Mr. Nagpal graduated from San Diego State University with a Bachelor of Arts degree in Political Science and a Minor in Psychology. Mr. Nagpal received his law degree from the Thomas Jefferson School of Law in San Diego in 1999, receiving an American Jurisprudence Award in Criminal Procedure and a Trustee's Scholarship for Academic Achievement. Additionally, Mr. Nagpal externed at the San Diego Superior Court for the Honorable Ronald Prager.

Mr. Nagpal thereafter earned his Masters of Law in Real Estate from the John Marshall Law School in Chicago, Illinois, in 2001. Between 2001-2002, Mr. Nagpal acted as legal counsel for CB/Richard Ellis in Sacramento, handling site acquisitions for commercial properties and drafted commercial leases throughout the western United States. Mr. Nagpal concentrates in the areas of construction defect, real estate, and business litigation. Vik also specializes in the defense of Environmental claims relating to asbestos, toxic torts and hazardous waste. Additionally, he has dealt with cases complying with federal and state environmental laws



San Diego  
619.236.0048  
619.236.0047 fax  
vnagpal@bremerwhyte.com



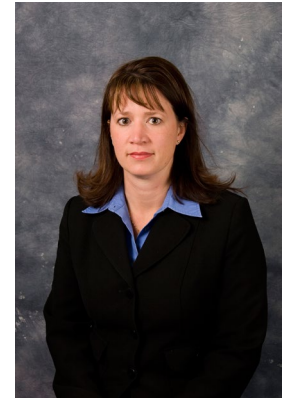
# BREMER WHYTE

BREMER WHYTE BROWN & O'MEARA LLP

## KAREN M. BAYTOSH

Karen M. Baytosh is a partner with Bremer Whyte Brown & O'Meara LLP. She has experience with all aspects of insurance defense litigation, with particular focus with complex litigation matters, including general liability and construction litigation in both State and Federal Court. Ms. Baytosh serves as the Westlaw representative and promotes continuing education seminars to Bremer Whyte Brown & O'Meara LLP's attorneys.

Born in Orange, California, Ms. Baytosh received her Bachelors of Science with honors from California State Polytechnic University, Pomona in 1991, with a major in Hotel and Restaurant Management and a minor in Business Administration. Ms. Baytosh received her Juris Doctorate with honors from Stetson University College of Law. While in law school she clerked for the Hon. Donetta Ambrose in the United States District Court, Western District of Pennsylvania and for Hon. R. Timothy Peters in the State of Florida, Sixth Judicial District. Ms. Baytosh is now admitted to practice before the State of California, the State of Nevada and the United States District Court for the Central District of California and the Southern District of California. She is a member of the American Bar Association, the Orange County Bar Association and the St. Thomas More Society in Orange County. Ms. Baytosh is currently focusing her practice in the areas of construction defect and general liability defense.



Las Vegas  
702.258.6665  
702.258.6662 fax  
[kbaytosh@bremerwhyte.com](mailto:kbaytosh@bremerwhyte.com)





MONIQUE R. DONAVAN

Monique R. Donovan works predominantly in the areas of insurance defense litigation and business litigation. She also has experience in insurance bad faith, construction, and employment litigation. She is licensed to practice before the Supreme Court of California and the Central District Court of the United States.

Ms. Donovan is a native Californian. She received her Bachelors of Science degree in Criminal Justice from California State University, Long Beach in 1992. While attending college, she worked as a law clerk at the Long Beach City Prosecutor's Office and was a member of an international soccer team that played in England and Holland. She obtained her Juris Doctor degree and Tax Certificate from Western State University, College of Law in 1995. Ms. Donovan concentrates her practice in the areas of civil litigation and business litigation.



Newport Beach  
949.221.1000  
949.221.1001 fax  
mdonavan@bremerwhyte.com



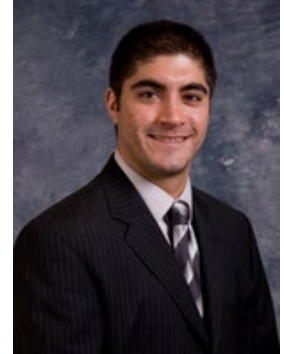
# BREMER WHYTE

BREMER WHYTE BROWN & O'MEARA LLP

## ARASH S. ARABI

Arash S. Arabi is the managing partner with Bremer Whyte Brown & O'Meara LLP's Los Angeles Office. Mr. Arabi joined Bremer Whyte Brown & O'Meara, LLP in 2002. He concentrates his practice in all aspects of complex civil litigation including general liability, construction, product liability and wrongful death/catastrophic injury.

Mr. Arabi is licensed to practice in the State of California as well as the United States District Court (Central District of California) and the Ninth Circuit Court of Appeal. Mr. Arabi received his Bachelor of Arts degree in Politics, Magna Cum Laude, from Ithaca College in New York. He thereafter earned his Juris Doctor degree from Pepperdine University School of Law in 2003. During law school, Mr. Arabi participated in Moot Court, was Chairperson of the prestigious Dalsimer Moot Court Competition and was Managing Editor of the Pepperdine Dispute Resolution Law Journal. Mr. Arabi's article, *Renegotiating Third World Debt*, 3 Pepp. Disp. Resol. L.J. 251, was published in 2003.



Woodland Hills  
818.712.9800  
818.712.9900 fax  
aarabi@bremerwhyte.com



# BREMER WHYTE

BREMER WHYTE BROWN & O'MEARA LLP

## LANETTA D.W. RINEHART

LANetta D.W. Rinehart is a partner with Bremer Whyte Brown & O'Meara LLP's Newport Beach office. Ms. Rinehart is admitted to practice before all courts in the State of California.

Ms. Rinehart earned her Bachelor of Arts degree in Philosophy from Chapman University, and was awarded the William James Award for departmental excellence in philosophy. Ms. Rinehart earned her Juris Doctor degree in 2000 from Loyola Law School while also handling complex litigation cases as a Certified Law Clerk at the busy civil litigation law firm of Smith, Smith & Harter, LLP. At Loyola Law School, Ms. Rinehart was awarded two First Honors Awards and offered a membership in the Phi Alpha Delta Honors Fraternity and Sir Thomas Moore Honor Society.

Prior to working with Bremer Whyte Brown & O'Meara LLP, Ms. Rinehart worked as an associate attorney handling microbial contamination, homeowners association, construction defect, and tenants' rights cases at the law firms of Cross & Associates in Irvine, California and Perona, Langer, Beck, Lallande & Serbin in Long Beach, California.

Ms. Rinehart is an Associate Member of the Robert A. Banyard Inn of Court, Orange County, and has lectured on indoor environmental law to industry professionals and experts at the May 2003 Forensic Consultants Association - Mold Workshop and several consumer seminars. Ms. Rinehart was also interviewed for the June 2003 issue of REO Magazine, Arizona.

Ms Rinehart presently concentrates her practice in complex construction defect law, homeowner's association issues, and environmental law.



Newport Beach  
949.221.1000  
949.221.1001 fax  
lrinehart@bremerwhyte.com



## JOHN J. BELANGER

John J. Belanger is the managing partner of Bremer Whyte Brown & O'Meara LLP's office in Phoenix, Arizona. Mr. Belanger has extensive experience in complex insurance defense litigation, including construction defect matters and wrongful death claims. His practice areas also include business litigation, contract and corporate law.

Mr. Belanger was born in Traverse City, Michigan but spent most of his childhood in Phoenix, Arizona. He earned a Bachelor of Arts degree, Cum Laude, in English from the University of Arizona in 1998. As a Dean Scholarship recipient, Mr. Belanger attended Pepperdine University School of Law and obtained his Juris Doctor degree, Cum Laude, in 2002. He also obtained a Certificate in Alternative Dispute Resolution from the nationally recognized Strauss Institute for Dispute Resolution at Pepperdine University.

While attending law school, Mr. Belanger externed with for the Honorable Lawrence Anderson in the United States District Court, District of Arizona. Mr. Belanger was also a certified high school basketball referee for both the California Interscholastic Federation and the Arizona Interscholastic Association. Mr. Belanger over a decade of experience working as a metal stud framer and drywall journeyman.

Mr. Belanger is admitted to practice law before the United States Supreme Court as well as before all Arizona State Courts and the United States District Court, District of Arizona. Mr. Belanger is a member of the Arizona State Bar, the American Bar Association and the Maricopa County Bar Association. He maintains active membership in the Construction Section of the Arizona State Bar.



Phoenix  
602.274.1204  
602.274.1205 fax  
[jbelanger@bremerwhyte.com](mailto:jbelanger@bremerwhyte.com)



# BREMER WHYTE

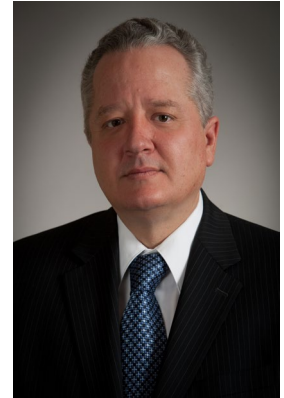
BREMER WHYTE BROWN & O'MEARA LLP

## PAUL A. ACKER

Paul A. Acker is a partner in the Nevada office of Bremer, Whyte, Brown & O'Meara, LLP. Mr. Acker is admitted to practice in all State and Federal Courts in the State of Nevada as well as the Ninth Circuit of Appeals and the United States Supreme Court. He is a member of the State Bar of Nevada and has extensive experience in complex civil litigation.

Mr. Acker received a Bachelor of Science in Business Administration with Honors at the University of Nevada, Las Vegas in 1985. During his collegiate career, he was admitted into the Phi Kappa Phi and Phi Lambda Alpha Honor Societies as well as the Sigma Nu and Alpha Kappa Psi fraternities. Following his graduation from college, Mr. Acker was awarded a WICHE scholarship and obtained his Juris Doctorate degree from Hastings College of the Law at the University of California at San Francisco in 1988. While in law school, Mr. Acker clerked with the Organized Crime Strike Force within the United States Department of Justice.

Mr. Acker returned to the State of Nevada in 1989. He was inducted in the Nevada American Inns of Court in 1992. Since 1989, Mr. Acker has concentrated his practice in the fields of insurance defense, general civil litigation, construction litigation, and transportation liability.



Las Vegas  
702.258.6665  
702.258.6662 fax  
packer@bremerwhyte.com



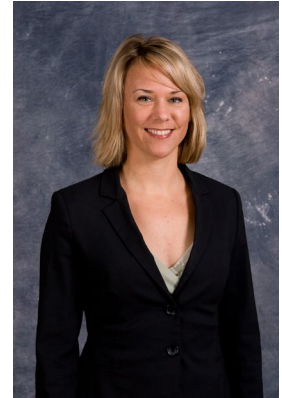
## ALISON HURLEY

Alison K. Hurley is an a partner at the Newport Beach offices of Bremer Whyte Brown & O'Meara, LLP. Ms. Hurley obtained her B.A. in Political Science from the University of California at San Diego in 1999, with minors in both History and Pan American Studies.

Ms. Hurley graduated in the top quarter her class from the University of California, Hastings College of the Law in May of 2004. While attending UC Hastings, Ms. Hurley received the Witkin Award for Academic Excellence and the Cali Excellence for the Future Award for achieving the highest grade in her Sales and Leases of Goods course. She was also a member of the Editorial Board of the Hastings International and Comparative Law Review in 2003 and 2004.

Ms. Hurley has second-chaired multiple trials and arbitration proceedings during her tenure with Bremer Whyte Brown & O'Meara, LLP. She has extensive experience defending all types of personal injury claims and has handled several cases dealing with catastrophic losses and traumatic brain injury.

Ms. Hurley was admitted to the State Bar of California in December of 2004, and is admitted to practice before all of the United States District Courts in the State of California as well as the Eastern District of Michigan. She was named a Southern California Super Lawyers Rising Star in 2009, 2010, 2011 and 2012. Ms. Hurley focuses her practice in the areas of business litigation and general liability defense.



Newport Beach  
949.221.1000  
949.221.1001 fax  
ahurley@bremerwhyte.com



# BREMER WHYTE

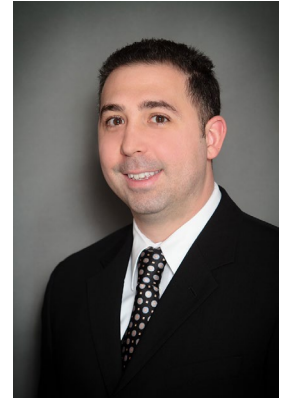
BREMER WHYTE BROWN & O'MEARA LLP

## LUCIAN GRECO

Lucian Greco Jr. is a partner with Bremer, Whyte, Brown & O'Meara in its Las Vegas office. Admitted to the Nevada Bar in 2007, Mr. Greco is licensed to practice before all courts in the state of Nevada.

Mr. Greco received his Bachelor of Arts degree in Philosophy, Magna Cum Laude, from the University of Buffalo in New York. He thereafter received his Juris Doctorate from the University of Buffalo School of Law in 2006. During law school, Mr. Greco served as Vice President of the Sports and Entertainment Law Society and worked as an intern for the Erie County Attorney's Office.

Mr. Greco concentrates his practice in all aspects of complex civil litigation, including construction defect and general liability defense matters.



Las Vegas  
702.258.6665  
702.258.6662 fax  
lgreco@bremerwhyte.com



ANTHONY T. GARASI

Anthony T. Garasi is a partner with Bremer, Whyte, Brown & O'Meara in its Las Vegas office. Mr. Garasi received his Bachelor of Arts degree in Journalism and Political Science from the University of Washington. He thereafter received his Juris Doctorate from the Seattle University School of Law, cum laude, in 2008. Mr. Garasi was admitted to the Nevada Bar in 2008.

Before moving to Las Vegas to begin his legal career, Mr. Garasi worked as a sports journalist in Seattle, WA. Mr. Garasi regularly covered the Seattle Mariners, Seattle Seahawks and University of Washington men's basketball team.

Mr. Garasi currently practices in the areas of construction and general litigation.



Las Vegas  
702.258.6665  
702.258.6662 fax  
agarasi@bremerwhyte.com





**RACHEL A. MIHAI**

Mrs. Mihai is a partner at the Newport Beach office of Bremer Whyte Brown & O'Meara, LLP. Mrs. Mihai grew up in North Carolina and moved to California for law school in 2003. She obtained her Bachelor of Arts degree in International Studies and Spanish from the University of North Carolina at Chapel Hill (UNC) in 2003. While studying at UNC, Mrs. Mihai lived and studied in Seville, Spain.

Mrs. Mihai earned her Juris Doctorate from Whittier Law School in 2006. She also obtained a certificate in international and comparative law. While at Whittier, she was the Research Editor for the Whittier Law Journal of Child and Family Advocacy. She published an article entitled, *The Trafficking of Children: A Modern Form of Slavery, Using the Alien Tort Statute to Provide Legal Recourse* in the 2006 Whittier Journal of Child and Family Advocacy. While in law school, Mrs. Mihai assisted indigent Hispanic women who were victims of domestic violence in obtaining immigration status. She was also a law clerk with Immigration and Customs Enforcement, Department of Homeland Security, where she litigated cases for the U.S. Government, under the supervision of government trial attorneys in the Los Angeles Immigration Court.

Mrs. Mihai joined Bremer, Whyte, Brown & O'Meara in 2007 as an associate attorney. She practices all areas of general liability and insurance defense litigation. This includes a particular focus with large loss general liability claims, homeowners association and property management claims, and property damage and bodily injury claims arising from involvement at construction projects, residential and commercial buildings, apartment complexes and units, malls and shopping centers, homeowners association common areas, sporting events and areas owned and controlled by public entities. Ms. Mihai has experience defending civil rights claims (42 U.S.C. §1983 claims), product liability actions and towing and trucking litigations, as well. Ms. Mihai has been successful on motions for summary judgment on issues involving bona fide purchasers and real estate non-disclosure. Ms. Mihai is licensed to practice law in California. She has experience litigating claims in California State and Federal Courts. She has also successfully argued before the California Fourth District Court of Appeal.



Newport Beach  
949.221.1000  
949.221.1001 fax  
rmihai@bremerwhyte.com



# BREMER WHYTE

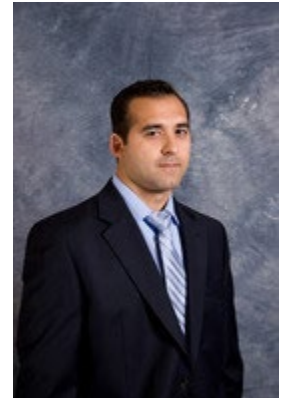
BREMER WHYTE BROWN & O'MEARA LLP

## MICHAEL A. D'ANDREA

Michael D'Andrea is a Partner in the Los Angeles office of Bremer Whyte Brown & O'Meara, LLP. Mr. D'Andrea is a skilled and experienced litigator, representing a wide variety of clients in civil actions throughout California. Mr. D'Andrea specializes in defending small business owners, Fortune 500 companies, real estate developers, public entities, insurers, and individuals in litigation matters. He concentrates his practice in general liability litigation, personal injury litigation, products liability, and construction litigation. His litigation and counseling experience includes work for companies in the security, consumer goods, restaurant, entertainment, trucking, manufacturing, automotive, and construction industries.

Mr. D'Andrea was born and raised in Los Angeles, graduating from Loyola Marymount University in 2005 with a Bachelor's Degree in English Literature. He subsequently graduated from Southwestern Law School in 2008 earning his J.D. After law school, Mr. D'Andrea began his career as a litigator, with hundreds of representative matters concluded successfully on behalf of his clients to date. Mr. D'Andrea is also an accomplished and published author, with recent works appearing in the Los Angeles Daily Journal, Los Angeles Lawyer Magazine, and The California Recorder.

Mr. D'Andrea currently resides in Los Angeles with his wife and two children.



Woodland Hills  
818.712.9800  
818.712.9900 fax  
[mdandrea@bremerwhyte.com](mailto:mdandrea@bremerwhyte.com)



## SHEILA C. STILES

Sheila Stiles is a partner in the Newport Beach office of Bremer Whyte Brown & O'Meara LLP. Ms. Stiles joined the firm in 2010 and limits her practice to family law matters. Ms. Stiles is certified as a Family Law Specialist by the California Board of Legal Specialization of the State Bar of California. She has extensive experience in handling all aspects of family law matters, including divorce, complex custody and visitation matters, complex business valuation and income determination, modifications, child support, spousal support, parentage/paternity, property division, prenuptial agreements, postnuptial agreements, enforcement and family law mediation.

Ms. Stiles strives to achieve the goals of her clients by focusing on quality of our work, cost effectiveness, preparation, aggressive advocacy and the ability to meet the needs of her clients with a positive outlook and sympathetic ear when need be. Ms. Stiles has a passion for family law and her clients.

Ms. Stiles obtained her Bachelor of Arts in Liberal Arts with a major in History from the University of San Diego in 1997. While attending USD, Ms. Stiles was a member of the Women's Intercollegiate Basketball Team. She attended the University of San Diego, School of Law and graduated with her Juris Doctorate in 2000.

Ms. Stiles was admitted to the State Bar of California in August of 2004. She is a member of the Family Law Section of the Orange County Bar Association. She is also an active member of the Sonenshine Pro Bono Opportunities Committee, which is an annual Orange County event that provides a forum for local pro bono organizations to introduce themselves to new members of the legal community.

Ms. Stiles is married with three children.



Newport Beach  
949.221.1000  
949.221.1001 fax  
sstiles@bremerwhyte.com



# BREMER WHYTE

BREMER WHYTE BROWN & O'MEARA LLP

## ASSOCIATES

Rick L. Peterson<sup>1</sup>  
Lance J. Pedersen<sup>1</sup>  
Daniel A. Crespo<sup>1</sup>  
John C. Gottlieb<sup>1</sup>  
John R. Cayangyang<sup>1</sup>  
Alexander M. Giannetto<sup>1,11,12</sup>  
R. Todd Windisch<sup>1</sup>  
Troy A. Clark<sup>2,7</sup>  
Jeffrey W. Saab<sup>1</sup>  
Benjamin L. Price<sup>1</sup>  
Nicole M. Slattery<sup>1,3</sup>  
Kyle P. Carroll<sup>1</sup>  
Brandi M. Planet<sup>2,4</sup>  
Prescott T. Jones<sup>2</sup>  
Brian E. Cieniawski<sup>3,4</sup>  
Liza Velazco<sup>1,2,13</sup>  
Carl J. Basile<sup>1</sup>  
Jonathan A. Kaplan<sup>1</sup>  
Katherine Shrager<sup>1</sup>  
Scott W. Ulm<sup>2</sup>  
Alex M. Chazen<sup>1</sup>  
Jason S. Digioia<sup>1</sup>  
Holly A. Bartuska<sup>1,4</sup>  
Cameron B. Gordon<sup>1</sup>  
Eileen J. Gaisford<sup>1</sup>  
Chata N. Holt<sup>2</sup>  
Linda T. Lam<sup>1,2</sup>  
Darlene M. Cartier<sup>2</sup>  
Nicole L. Schmidt<sup>1</sup>

August B. Hotchkin<sup>2</sup>  
Jared G. Christensen<sup>2,14</sup>  
Nicholas C. Young<sup>1</sup>  
Kerry R. O'Brien<sup>2</sup>  
Christopher Schon<sup>1</sup>  
Kenneth L. Mariboho II<sup>1</sup>  
Nicole Nuzzo<sup>1</sup>  
Jenna M. Warden<sup>1</sup>  
Kevin Y. Kanooni<sup>1</sup>  
Lance Rogers<sup>1</sup>  
Patrick Taylor<sup>1</sup>  
Sarita Patel<sup>1</sup>  
Michelle Campbell<sup>1</sup>  
Chelsie A. Adams<sup>2</sup>  
Laurie Elza<sup>1</sup>  
Chelsee M. Montgomery<sup>1</sup>  
Danielle N. Lincors<sup>1</sup>  
Paul A. Delgadillo<sup>1</sup>  
Jennifer Yanni<sup>1</sup>  
Nicholas S. Kam<sup>1</sup>  
Kelli M. Winkle-Pettersen<sup>1</sup>  
Jenna C. Garza<sup>1</sup>  
Ross A. Dillion<sup>1</sup>  
David C. Larsen<sup>1</sup>  
R. Christopher Jackson<sup>1</sup>  
Natasha M. Wu<sup>1</sup>  
Morgan B. Halley<sup>1</sup>  
Marissa C. Marxen<sup>1</sup>  
Cynthia R. Beek<sup>1</sup>

Tiffany L. Bacon<sup>1</sup>  
Micah Mtabikwa-Walker<sup>2</sup>  
Kevin H. Park<sup>1</sup>  
Heather L. Frimmer<sup>1</sup>  
David J. Byassee<sup>1</sup>  
Raymond E. Areshenko<sup>1</sup>  
Alexandra N. Iorfino<sup>1</sup>  
Merritt E. Cosgrove<sup>1</sup>  
Tracey L. Stromberg<sup>1</sup>  
Jacqueline A. Marcott<sup>1</sup>  
Madeline M. Arcellana<sup>2</sup>  
Lesley A. Powers<sup>1</sup>  
Haasty S. Burns<sup>1</sup>  
Victor Xu<sup>1</sup>  
Norman S. Fulton III<sup>3</sup>  
Jason H. Dang<sup>1</sup>  
Matthew E. Primm<sup>1</sup>  
Bradley D. Bace<sup>2</sup>  
Peter M. Jaynes<sup>1</sup>  
Matthew B. Meehan<sup>3</sup>  
Melissa L. Gould<sup>3</sup>

1 Admitted in California  
2 Admitted in Nevada  
3 Admitted in Arizona  
4 Admitted in Colorado  
5 Admitted in Ohio  
6 Admitted in Washington D.C.  
7 Admitted in Oregon

8 Admitted in Montana  
9 Admitted in Wyoming  
10 Admitted in Washington  
11 Admitted in New Jersey  
12 Admitted in New York  
13 Admitted in Illinois  
14 Admitted in Utah

\* Certified Family Law Specialist